



# **CICCA**

## **CENTRAL ILLINOIS CAMERA CLUB ASSOCIATION**

# DEFINITIONS AND RULES FOR SALONS



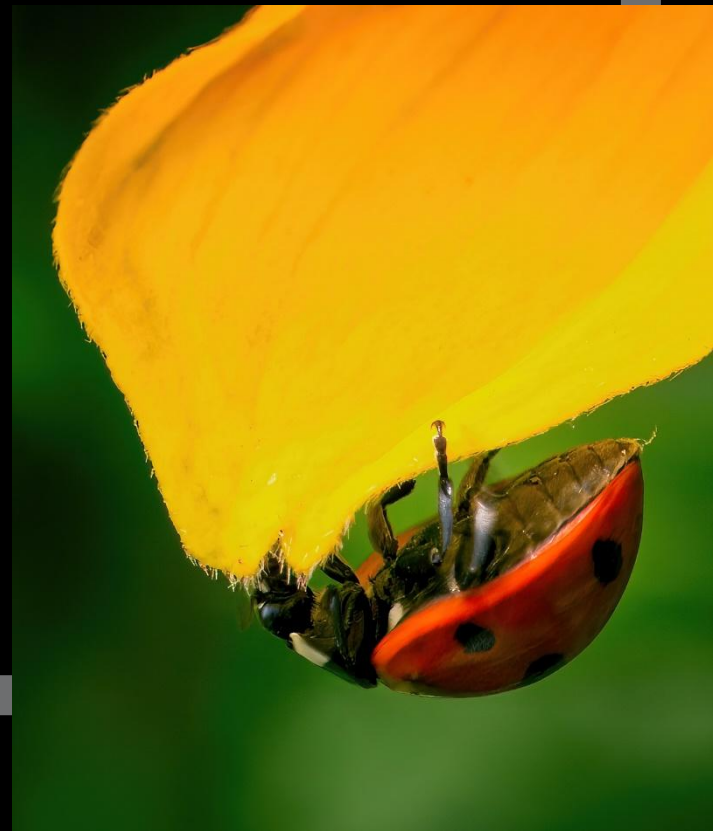
# SPRING AND FALL SALONS

## ELIGIBILITY

A. ONLY MEMBERS OF  
CICCA IN GOOD STANDING  
MAY SUBMIT ENTRIES TO A  
SALON.

B. EACH ENTRY MUST  
HAVE A PHOTOGRAPHIC  
BASE AND ALL OF THE  
PHOTOGRAPHIC  
ELEMENTS MUST HAVE  
BEEN TAKEN BY THE  
MAKER.

C. NO ENTRY IN ANY  
CICCA SALON THAT HAS  
EARNED AN ACCEPTED,  
HONORS, OR MEDALLION  
MAY BE ENTERED,  
IRRESPECTIVE OF  
CATEGORIES.







# DIGITAL IMAGE SUBMISSIONS

**NO INDIVIDUAL MEMBER, REGARDLESS OF THE NUMBER OF CLUBS OF WHICH HE OR SHE IS A MEMBER, MAY SUBMIT MORE THAN THREE (3) IMAGES IN ANY CATEGORY.**

**DIGITAL IMAGES MUST BE IN JPEG FORMAT. THE DIMENSIONS OF THE IMAGE SHOULD BE NO LARGER THAN 1400 PIXELS HORIZONTALLY AND NO LARGER THAN 1050 PIXELS VERTICALLY. ONE OF THESE DIMENSIONS SHALL BE MET, BUT NEITHER EXCEEDED. THERE IS NO RESTRICTION ON FILE SIZE OF THE JPEG.**

**3. ADDITIONALLY, IT IS HIGHLY RECOMMENDED THAT DIGITAL IMAGES BE ENTERED USING THE SRGB COLOR SPACE BECAUSE THE DIGITAL IMAGE PROJECTORS HAVE BEEN CALIBRATED USING THIS COLOR SPACE. ENTRIES SUBMITTED USING A DIFFERENT COLOR SPACE (E.G. ADOBERGB) MAY CONTAIN ODD COLOR CASTS OR OTHER COLOR DISTORTIONS.**

**THERE SHOULD BE NO IDENTIFYING INFORMATION (E.G. MEMBER'S NAME, IMAGE TITLE, WATERMARK, ETC.) ON THE DIGITAL IMAGE.**

**ENTRANTS SHOULD PROVIDE THEIR DIGITAL IMAGES AND INDIVIDUALLY PREPARED ENTRY FORMS TO THEIR CLUB'S CICCA REPRESENTATIVE OR DESIGNEE, WHO SHOULD THEN COMPLETE THE EXCEL ENTRY FORM.**

**ENTRIES THAT DO NOT MEET THE REQUIREMENTS STIPULATED IN THIS SECTION WILL BE DISQUALIFIED.**



# NATURE EXAMPLES

Images depicting  
natural subjects with  
no visible Hand of  
Man.

Cultivated Plants, Domestic  
Animals and Mounted  
Museum Pieces do not  
Qualify





# SALON CATEGORIES

## A: NATURE

NATURE PHOTOGRAPHY EMBRACES THE ENTIRE PHYSICAL AND NATURAL WORLD AND THUS ENCOMPASSES NATURE IN ALL ITS FORMS. THERE SHOULD BE NO EVIDENCE OF THE INFLUENCE OF MAN IN A NATURE PHOTOGRAPH. PHOTOGRAPHS DEPICTING CULTIVATED PLANTS, DOMESTIC ANIMALS, AND MOUNTED MUSEUM SPECIMENS ARE NOT ELIGIBLE

EXCEPTION: SCIENTIFIC BANDING VISIBLE ON WILD ANIMALS WILL NOT BE CONSIDERED A DISQUALIFICATION. IN ADDITION, IMAGES OF ZOO AND GAME PARK ANIMALS MAY BE ENTERED, AS LONG AS THE "HAND OF MAN" IS NOT VISIBLE IN THE IMAGE.

GLOBAL ADJUSTMENTS ARE THOSE MODIFICATIONS THAT AFFECT THE WHOLE IMAGE. PERMISSIBLE GLOBAL ADJUSTMENTS INCLUDE, BUT ARE NOT NECESSARILY LIMITED TO: LEVELS, CURVES, BRIGHTNESS, CONTRAST, SATURATION, WHITE BALANCE, SHARPENING AND CROPPING.





# SALON CATEGORIES

## A: NATURE CON'T

**SELECTIVE ADJUSTMENTS ARE ADJUSTMENTS THAT AFFECT ONLY PORTIONS OF THE IMAGE, TYPICALLY APPLIED WITH SELECTIONS OR BRUSHES, AND ARE NOT PERMITTED IN THE NATURE CATEGORY WITH THE SOLE EXCEPTION OF ELIMINATING SPOTS ON THE IMAGE DUE TO DUST ON THE CAMERA'S SENSOR.**

**FOR THE PURPOSES OF CLARITY, THE USE OF PRESETS AND ADJUSTMENTS IN SOFTWARE (E.G. ADOBE LIGHTROOM, ADOBE PHOTOSHOP) AND RELATED PLUG-IN FILTERS (E.G. TOPAZ LABS, NIK SOFTWARE) IS ALLOWED PROVIDED, HOWEVER, THAT THE ADJUSTMENTS ARE GLOBAL.**

**BLENDING OF IMAGES FROM DIFFERENT SCENES OR BLENDING OF TWO VERSIONS OF THE SAME IMAGE IS NOT PERMITTED IN THE NATURE CATEGORY.**

**BORDERS, VIGNETTES, AND INFRARED IMAGES ARE NOT ALLOWED**





# PHOTO- REALISTIC EXAMPLES

Images must be of a  
realistic quality

Category is unrestricted.  
No infrared allowed.





# SALON CATEGORIES

## B: PHOTO-REALISTIC

THE EMPHASIS FOR THIS CATEGORY IS ON AESTHETICS AND CREATING AN IMAGE WITH GREAT IMPACT WHILE MAINTAINING A REALISTIC QUALITY.

THE SUBJECT MATTER OF THIS CATEGORY IS UNRESTRICTED.

THERE ARE NO RESTRICTIONS FOR IMAGE ENHANCEMENT PROVIDED THAT THE RESULTING IMAGE (A) MAINTAINS A REALISTIC-LOOKING APPEARANCE, (B) APPEARS TO HAVE BEEN MADE IN A SINGLE EXPOSURE, AND (C) HAS A PHOTOGRAPHIC BASE AND ALL OF THE PHOTOGRAPHIC ELEMENTS MUST HAVE BEEN TAKEN BY THE MAKER.

FOR THE PURPOSES OF CLARITY, IMAGES SUBMITTED FOR THIS CATEGORY CAN BE FROM A SINGLE EXPOSURE OR FROM MULTIPLE EXPOSURES THAT ARE BLENDED TOGETHER (E.G. HDR, IMAGE STACKING FOR DEPTH OF FIELD, PANORAMAS, COMPOSITES) TO CREATE A SINGLE IMAGE.

BORDERS AND VIGNETTES ARE ALLOWED. INFRARED IMAGES ARE NOT ALLOWED.





# ALTERED REALITY EXAMPLES

Image emphasis is on  
creativity

Category is unrestricted.  
Infrared allowed.

UPER LEFT: MATT SEGEBART  
LOWER LEFT: LADEAN SPRING  
RIGHT: JEANETTE KOSIER





# SALON CATEGORIES

## C: ALTERED REALITY

THE EMPHASIS FOR THIS CATEGORY IS ON CREATIVITY WITH NO RESTRICTIONS FOR ENHANCEMENT OF THE IMAGE(S) USED TO CREATE THE FINAL PRODUCT.

AN ALTERED REALITY IMAGE SHOULD DEPART FROM REALITY AND BE NOTICEABLY DIFFERENT FROM A SCENE VIEWED THROUGH A CAMERA LENS. WHILE THE UNDERLYING IMAGE(S) MAY SEEM FAMILIAR, ITS OVERALL LOOK SHOULD REFLECT ONE OR MORE ELEMENTS OF AN ALTERED EXISTENCE.

THE IMAGE MUST HAVE A PHOTOGRAPHIC BASE AND ALL OF THE PHOTOGRAPHIC ELEMENTS MUST HAVE BEEN TAKEN BY THE MAKER. *NO AI GENERATED IMAGES ARE ALLOWED.*

BORDERS, VIGNETTES, AND INFRARED IMAGES ARE ALLOWED.

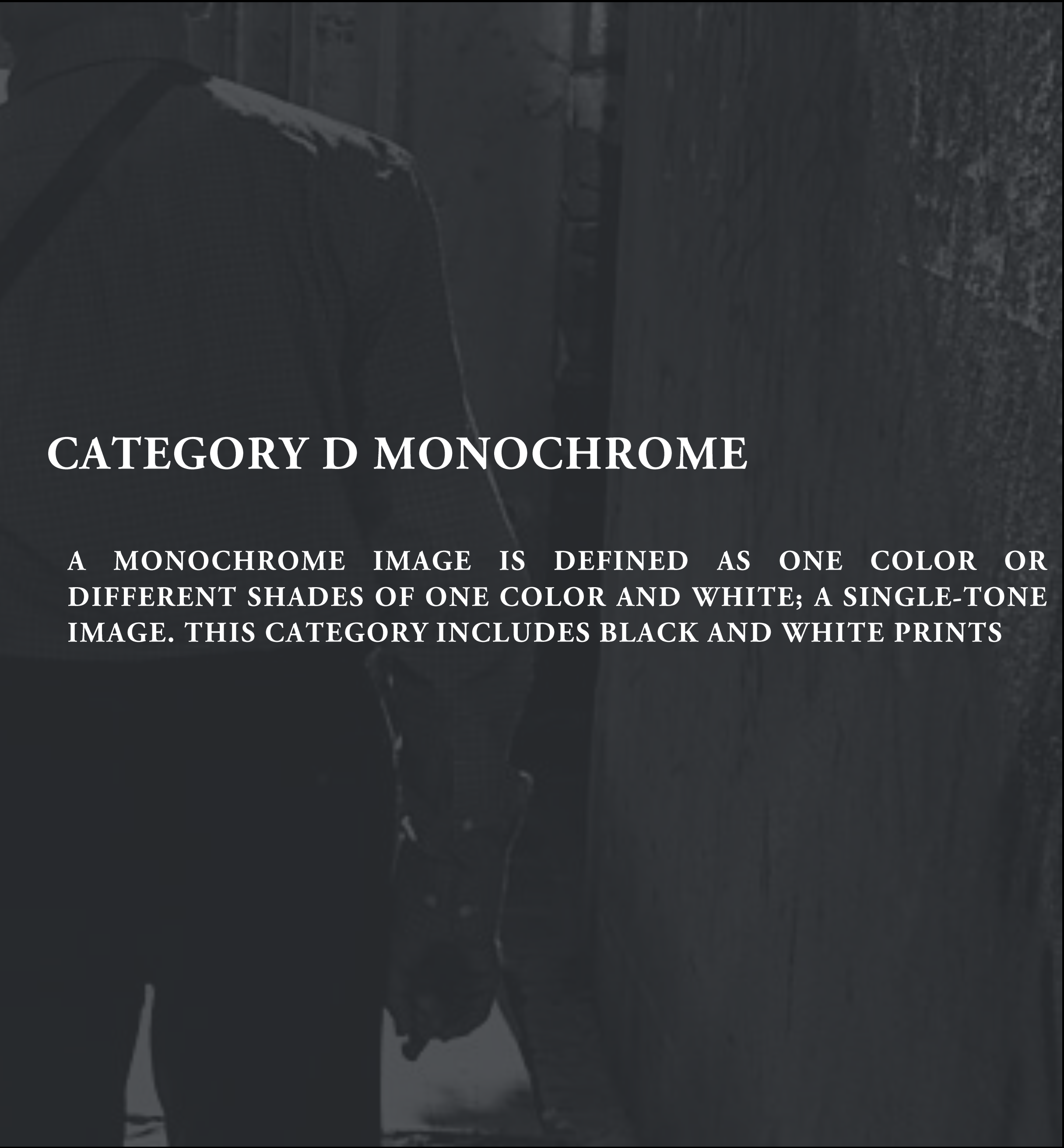






## CATEGORY D MONOCHROME

A MONOCHROME IMAGE IS DEFINED AS ONE COLOR OR DIFFERENT SHADES OF ONE COLOR AND WHITE; A SINGLE-TONE IMAGE. THIS CATEGORY INCLUDES BLACK AND WHITE PRINTS





# SALON CATEGORIES

## E- CLUB'S CHOICE

THE HOST CLUB HAS THE OPTION OF SELECTING THIS CATEGORY. EXAMPLES INCLUDE BUT ARE NOT LIMITED TO: PORTRAITS, PEOPLE, SPORT, MOTION, MONOCHROME, DOORS & WINDOWS, ARCHITECTURE, WEDDING, MACRO, RED DOORS, CELL PHONE PHOTOGRAPHY, AND STREET PHOTOGRAPHY. THE HOST CLUB SHALL SPECIFY POST PROCESSING RESTRICTIONS, IF ANY.

THE HOST CLUB HAS CHOSEN *FARMING*. THIS IS FOR SPRING 2025 SALON. EACH SALON WILL BE DIFFERENT.

ANYTHING RELATED TO FARMING. BARNS, MACHINERY, FARMERS, LIVESTOCK ETC. NO RESTRICTIONS ON EDITING.





# NAMING CONVENTIONS FOR DIGITAL IMAGES

## WHAT'S IN A NAME

W-001-CLUB#-MAKERS #

W= A FOR NATURE, B FOR PHOTOREALISTIC,  
C=ALTERED REALITY D= MONOCHROME  
E=CLUB CHOICE

001= YOUR IMAGE NUMBER, TYP 001,002 OR 003

CLUB #= YOUR CICCA CLUB NUMBER. PEORIA IS 14

MEMBER #= YOUR MEMBER NUMBER FROM  
YOUR CLUB

MUST BE 3 DIGIT.

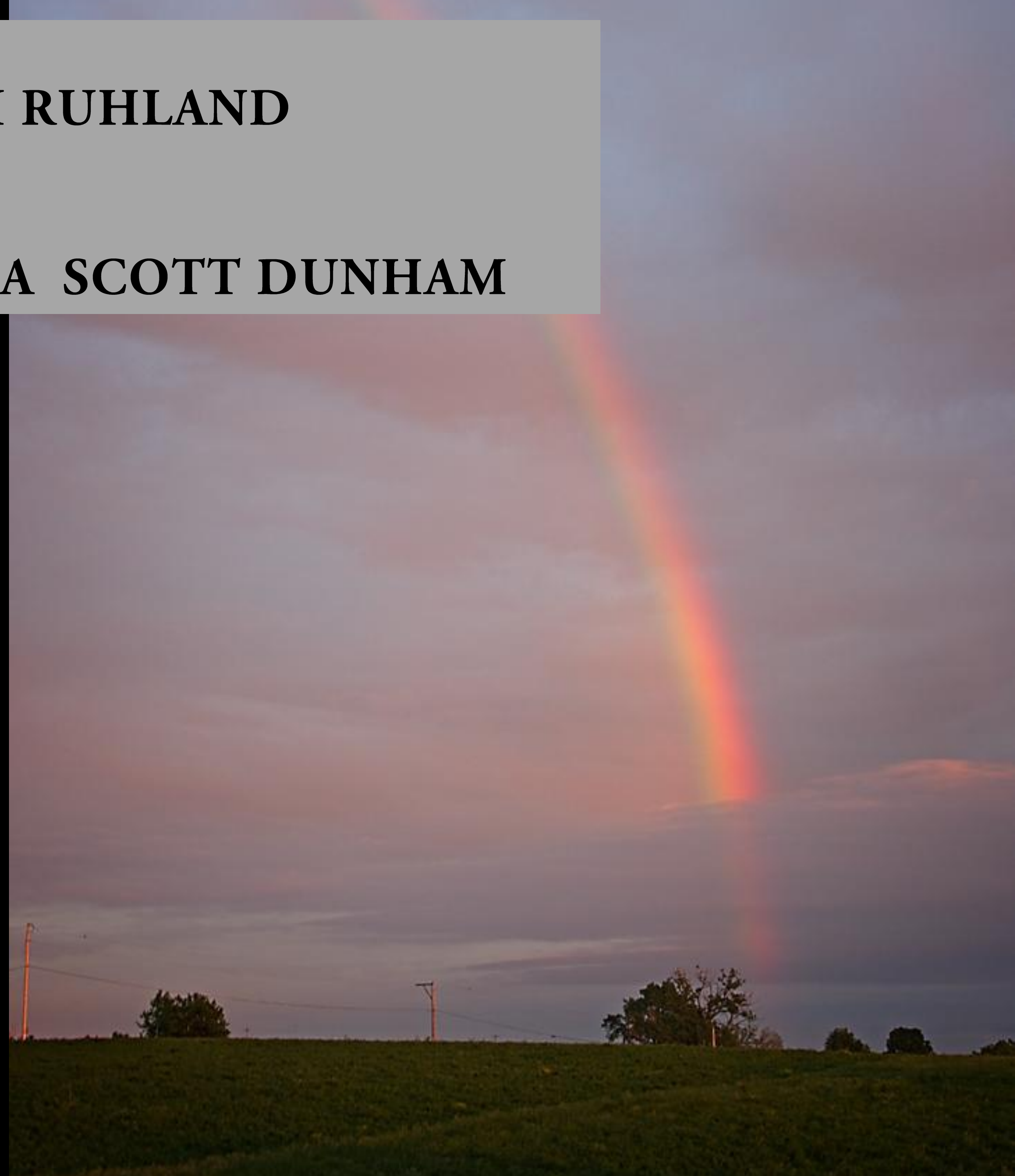


**EXAMPLES     A-002-14-007.JPG**  
**NATURE IMAGE #2 BY PEORIA TOM RUHLAND**

**D-001-14-027.JPG**  
**CLUB CHOICE IMAGE #1 BY PEORIA SCOTT DUNHAM**

THIS WILL BE THE FILENAME  
FOR YOUR IMAGE. THE JPG  
EXTENSION WILL BE ADDED  
AUTOMATICALLY.

PLEASE PROVIDE  
YOUR TITLES TO  
YOUR REP WHEN  
SUBMITTING IMAGES.





# FEES AND AWARDS:

THE ENTRY FEE (HELPS COVER THE COST OF THE SALON)

5\$ FOR DIGITAL

YOU MAY SUBMIT 25 IMAGES IN DIGITAL. (5 IN EACH CATEGORY)

RIBBON AWARDS WILL BE GIVEN FOR EACH ACCEPTANCE AND HONOR IMAGES. THE BEST OF EACH CATEGORY WILL RECEIVE A MEDALLION.

FEES MUST BE SUBMITTED TO YOUR CICCA REPRESENTATIVE

IF YOU WOULD LIKE TO ATTEND THE JUDGING PLEASE RSVP YOUR CICCA REPRESENTATIVE WITH YOUR INTENTION.



A close-up photograph of a hummingbird hovering near a cluster of bright pink flowers. The bird is positioned on the right side of the frame, facing left towards the flowers. Its wings are blurred due to rapid movement. The background is a soft, out-of-focus green, suggesting foliage. The overall scene is vibrant and captures a moment of nature.

VISIT [WWW.CICCACLUBS.COM](http://WWW.CICCACLUBS.COM)

FALL/SPRING  
SALON/DOCUMENTS

*Tom Rutland*  
photography



A close-up photograph of a hummingbird in flight, hovering near a cluster of bright pink flowers. The bird has iridescent green feathers on its back and a long, thin black beak. Its wings are blurred from motion. The background is a soft, out-of-focus green, suggesting foliage.

For Use by CICCAs Reps  
only. All Images  
Copyright 2025.

Tom Ruhland ACICCA